

# ***Glenelm School***

## ***Community Report***

### ***2019-2020***

96 Carmen Avenue, Winnipeg, MB, R2L 0E6

Phone: 204-667-8534 | Fax: 204-654-8592 | Email: [glenelm@wsd1.org](mailto:glenelm@wsd1.org)

### **Our Purpose**

Winnipeg School Division provides a learning environment that fosters the growth of each student's potential and provides equitable opportunity to develop the knowledge, skills, and values necessary for meaningful participation in a global and diverse society.



### **Our Vision**

Is for current and future people learning and working within Winnipeg School Division to be:  
**Engaged, Confident, Inspired, and Successful Learners.**

## ***About our school***

Glenelm is a nursery to grade 6 school located in the west part of Elmwood in the Winnipeg School Division. We have currently a population of approximately 135 students, 10 teachers and 6 support staff. Glenelm has a Lunch Program, a before and after school daycare and a very active Parent Council.

Glenelm provides many opportunities for students to maximize their individual potential and become active citizens in society through a strong academic program as well as extracurricular activities in sports, clubs and the arts.

[www.winnipegssd.ca/schools/glenelm](http://www.winnipegssd.ca/schools/glenelm)

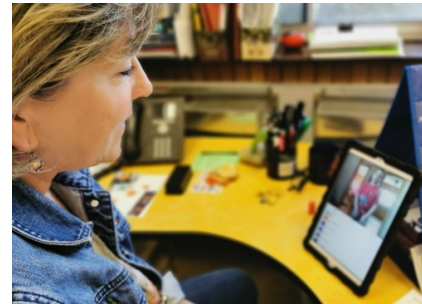


WINNIPEG SCHOOL DIVISION

# Highlights



- French Program
- Student Led Conferences
- "I Love to Read" activities
- School Patrols
- Snack Program
- Intramural Program
- Parent Run Lunch Program
- Terry Fox Run
- Orange Shirt Day
- Mindfulness Assembly (Kindness Hearts)
- Word of the Week (WOW)
- Soccer Tournament
- Bus ridership
- Swimming Counts program for Grade 4's
- Red River College Nurses program
- Civic Elections
- Bag-up recycling program
- Volleyball tournament







## Priorities for 2019 - 2020

**Provide robust comprehensive education, equitable access, diverse opportunity and a supportive learning environment for all students to help them prepare for their journey with values of learning social justice, and to be responsible community members.**

- School wide increase in ELA (writing) with the support of the school support team.
- Use of Dreambox program in grade 1 resulted in greater understanding of concepts.
- Integration of iPad/chromebook technology into all classrooms to increase students' literacy skills
- Purchase of iPads and computers to increase student access to technology
- Phonemic Awareness program for Kindergarten parents and students
- Teachers using SeeSaw, Google Meets and Microsoft Teams to connect with students during the pandemic.
- Instruction and usage of LLI (Leveled Literacy Instruction) kit to target students who need extra support.

**Improve school attendance, achievement and graduation rates through the exploration of additional programs and strategies.**

- Extensive resource support in Math and Language Arts using an RTI model.
- Student specific programming to address individual needs of students requiring extra assistance
- Proactive approach to support student behaviour (Kindness Hearts, Kindness Calendars, restorative practices, Day of Pink)
- Use of truancy officer to support families.

**Further develop initiatives and innovative approaches addressing individual student needs and accessibility requirements, mental health issues, childcare needs and nutritional needs.**

- Teaching and instruction of mindfulness strategies in class.
- Materials purchased to aid in teaching human rights issues, inclusiveness and belonging (Orange Shirt Day assembly and teachings)
- Use of Zones of Regulation throughout the building
- Purchases of Alternative seating devices to help students regulate their bodies.

## Priorities for 2020-2021

To build a sense of community in all students. This year students will focus on developing a sense of pride in their self, in their school and in their community. To continue the use of the Kindness Calendars, Mindfulness Awards to help instill the ability for students to feel positive about themselves and others'.

**Literacy:** To focus on student writing development in all stages. For students to improve their writing skills by having teachers using strong pedagogy and direct resources to make an impact. Focus on areas of Word Choice and Writing Conventions. School wide activities along with direct teaching will be used to have an impact teaching. Creation of support team to target students for recovery learning.

**Math:** To focus on students achieving grade level outcomes in Mental Math strategies. Continue to use support from EYST (Early Years Support Teacher) to work with Grade 1 & Grade 2 teachers so students are prepared for Grade 3.

# Parent and Community Involvement



- Remembrance Day
- "I Love to Read" guest readers
- Home Reading Program
- Quarterly Hot Lunch Program
- Student Voice planned events
- Terry Fox Run
- Lunch Program
- Winter concerts
- School Wide Pancake Breakfast
- Field trips
- Take home garden
- Phonemic awareness
- Staff appreciation

